

## NEWS RELEASE

March 7, 2022

FOR IMMEDIATE RELEASE

Contact: Myra Stoney, Health Director, [director@swhealth.ne.gov](mailto:director@swhealth.ne.gov), 308-345-4223

### COVID-19 Update for Southwest Nebraska

- 17 cases of COVID-19 were recorded in Southwest Nebraska Public Health Department (SWNPHD) between February 28 - March 6, 2022. Less than 4% of tests were positive in SWNPHD in the past month. Since April 2020, over 84,500 tests have been reported across the 9 districts, at least 22,650 people have been tested at least once for COVID. In the past 2 years, over 7300 persons have tested positive at least once in SWNPHD.
- SWNPHD has free at-home COVID-19 test kits available, along with locations in all nine counties of the health district. To find a pickup location, visit the COVID information page of [swhealth.ne.gov](http://swhealth.ne.gov).
- Vaccination rates have plateaued for almost all age groups across SWNPHD: 42% of all residents are fully vaccinated. 47% of those who received the minimum recommended dose (1 or 2 doses as indicated) has also received their vaccine boosters. The proportion of 'boostered' individuals is higher among older age groups (over 70% in 65+ year olds)

#### Weekly report Feb 28 – Mar 6, 2022

##### Overview

The weekly report will look at COVID-19 cases in SWNPHD across different time periods, presenting graphs showing daily progress of cases and a weekly summary in conclusion

- The first table describes total COVID positive cases detected from **Feb 28 – Mar 6** (1 week) and **Feb 7 – Mar 6** (4 weeks) in Chase, Dundy, Hayes, Hitchcock, Frontier, Furnas, Keith, Perkins, and Red Willow counties. Positive results are described as weekly and monthly **COVID cases/10,000 population**.
- The second table describes all COVID tests conducted in SWNPHD from **Feb 28 – Mar 6** (1 week) and **Feb 7 – Mar 6** (4 weeks). We describe **total tests, positive cases and test positivity rate** by age and gender.
- The third table shows the **proportion of persons fully vaccinated** in SWNPHD. We define “fully vaccinated” as the proportion of persons who have received the minimum recommended dose (2 for Pfizer & Moderna; 1 for Janssen vaccines). Data is described by **county and age** category. Data is current as of **Mar 6, 2022**.
- The first graph looks at the weekly progress of the pandemic from **April 1, 2020 – Mar 6, 2022**, across all 9 counties in SWNPHD. We describe the **daily COVID positive case rate (7-day rolling average<sup>1</sup>)** across SWNPHD.
- The second graph describes the **average daily case rate (7-day rolling) by age** from **April 1, 2020 – Mar 6, 2022**, dividing the population by **10-year age categories**.

---

<sup>1</sup> 7-day rolling average refers to the sum of the cases reported on that day and the preceding 6 days divided by 7. This number is presented for each day to 'smooth out' the line for cases.

- The third set of graphs describe the **daily number of COVID tests** in SWNPHD, further **divided as negative and positive** results from April 17, 2020 – March 6, 2022. The graph also shows the **average COVID test positivity rate (7-Day Rolling)** in SWNPHD during this time.

The table below describes COVID positives/10,000 population and the positivity rate for the **past week (Feb 28 – Mar 6, 2022)** & the past 4 weeks (**Feb 7 – Mar 6, 2022**)

|              | Total Population | Feb 28 – Mar 6 (1 week)          |                      | Feb 7 – Mar 6 (4 weeks).         |                      |
|--------------|------------------|----------------------------------|----------------------|----------------------------------|----------------------|
|              |                  | Positive cases/10,000 population | Test Positivity rate | Positive cases/10,000 population | Test Positivity rate |
| Chase        | 3,734            | 0.0                              | 0.0%                 | 16.1                             | 3.4%                 |
| Dundy        | 2,023            | 4.9                              | 4.8%                 | 19.8                             | 1.2%                 |
| Frontier     | 2,609            | 0.0                              | 0.0%                 | 34.5                             | 8.7%                 |
| Furnas       | 4,786            | 2.1                              | 8.3%                 | 60.6                             | 9.8%                 |
| Hayes        | 943              | 0.0                              | 0.0%                 | 53.0                             | 11.9%                |
| Hitchcock    | 2,843            | 0.0                              | 0.0%                 | 63.3                             | 3.5%                 |
| Keith        | 8,099            | 14.8                             | 7.1%                 | 66.7                             | 7.7%                 |
| Perkins      | 2,907            | 3.4                              | 3.4%                 | 20.6                             | 4.3%                 |
| Red Willow   | 10,806           | 1.9                              | 1.8%                 | 67.6                             | 6.8%                 |
| <b>TOTAL</b> | <b>38,750</b>    | <b>4.4</b>                       | <b>3.7%</b>          | <b>52.6</b>                      | <b>6.1%</b>          |

The table below describes COVID tests conducted, positives and the positivity rate by age and gender for the **past week (Feb 14 – Feb 20, 2022)** & the past 4 weeks (**Jan 24 – Feb 20, 2022**)

| Age (in yrs)                | Feb 28 – Mar 6 (1 week) |                |                      | Feb 7 – Mar 6 (4 weeks). |                |                      |
|-----------------------------|-------------------------|----------------|----------------------|--------------------------|----------------|----------------------|
|                             | Tests                   | Positive cases | Test Positivity rate | Tests                    | Positive cases | Test Positivity rate |
| 0-17                        | 39                      | 0              | 0.0%                 | 258                      | 19             | 7.4%                 |
| 18-29                       | 68                      | 4              | 5.9%                 | 453                      | 31             | 6.8%                 |
| 30-39                       | 56                      | 2              | 3.6%                 | 337                      | 20             | 5.9%                 |
| 40-49                       | 67                      | 0              | 0.0%                 | 456                      | 27             | 5.9%                 |
| 50-59                       | 66                      | 2              | 3.0%                 | 487                      | 31             | 6.4%                 |
| 60-69                       | 69                      | 3              | 4.3%                 | 436                      | 25             | 5.7%                 |
| 70-79                       | 39                      | 1              | 2.6%                 | 313                      | 21             | 6.7%                 |
| 80-89                       | 59                      | 5              | 8.5%                 | 626                      | 30             | 4.8%                 |
| <b>Total</b>                | <b>463</b>              | <b>17</b>      | <b>3.7%</b>          | <b>3,366</b>             | <b>204</b>     | <b>6.1%</b>          |
| <b>Gender</b>               |                         |                |                      |                          |                |                      |
| Female                      | 334                     | 14             | 4.2%                 | 2,448                    | 117            | 4.8%                 |
| Male                        | 121                     | 3              | 2.5%                 | 896                      | 83             | 9.3%                 |
| Data missing/ not disclosed | 8                       | 0              | 0.0%                 | 22                       | 4              | 18.2%                |
| <b>Total</b>                | <b>463</b>              | <b>17</b>      | <b>3.7%</b>          | <b>3,366</b>             | <b>204</b>     | <b>6.1%</b>          |

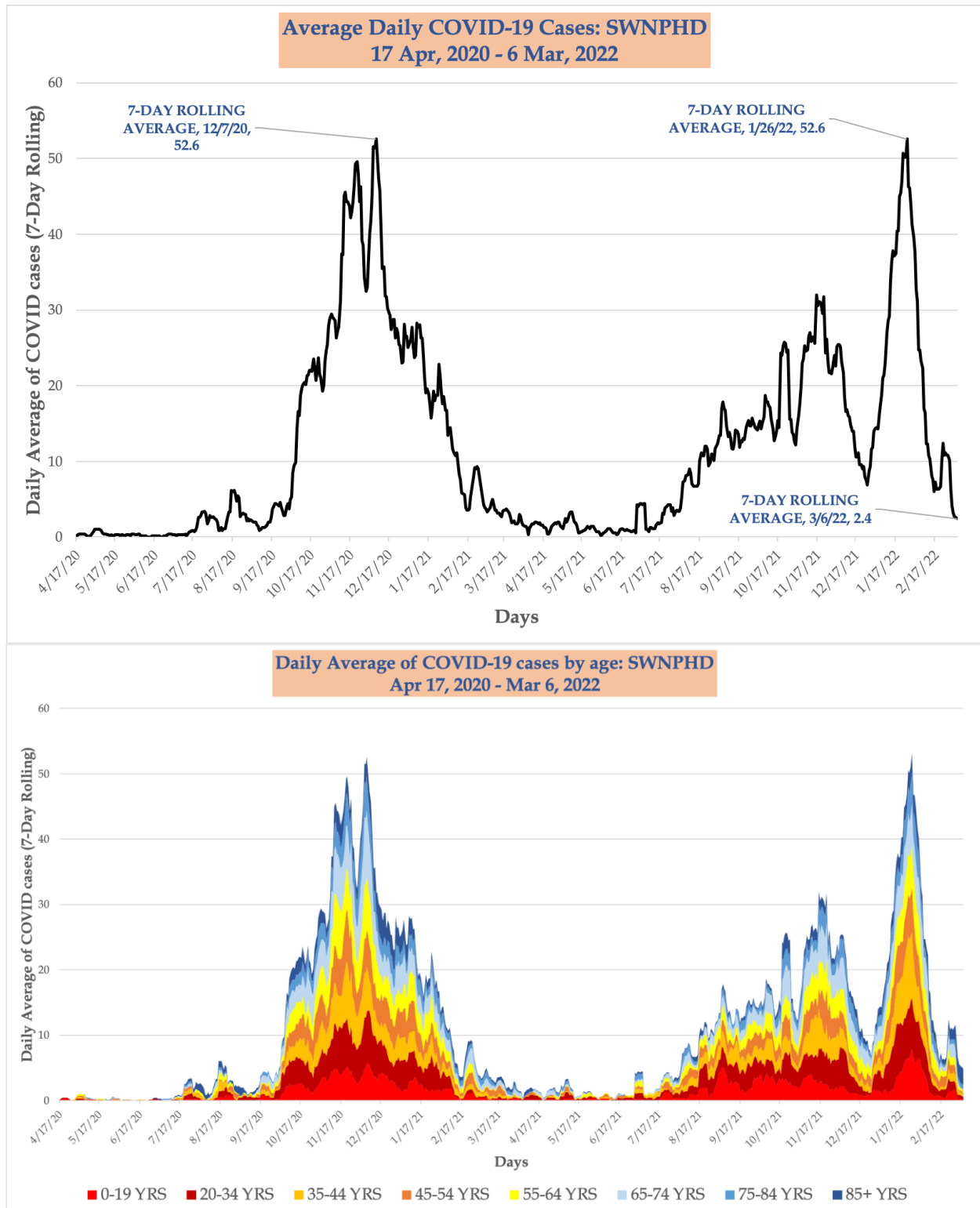
Details of vaccination rates by age in each of the nine counties in Southwest Nebraska Public Health Department is shown below. The legend for color codes used is also displayed. Percentages have been rounded off to the nearest whole number. Vaccines are currently available to all eligible residents aged 5 years and over.

Only 1<sup>st</sup> (Janssen) & 2<sup>nd</sup> doses (Moderna & Pfizer) have been considered, booster doses have not been counted to calculate the “completely vaccinated” rate. Date spans the period from **Dec 15, 2020 – Mar 6, 2022.**

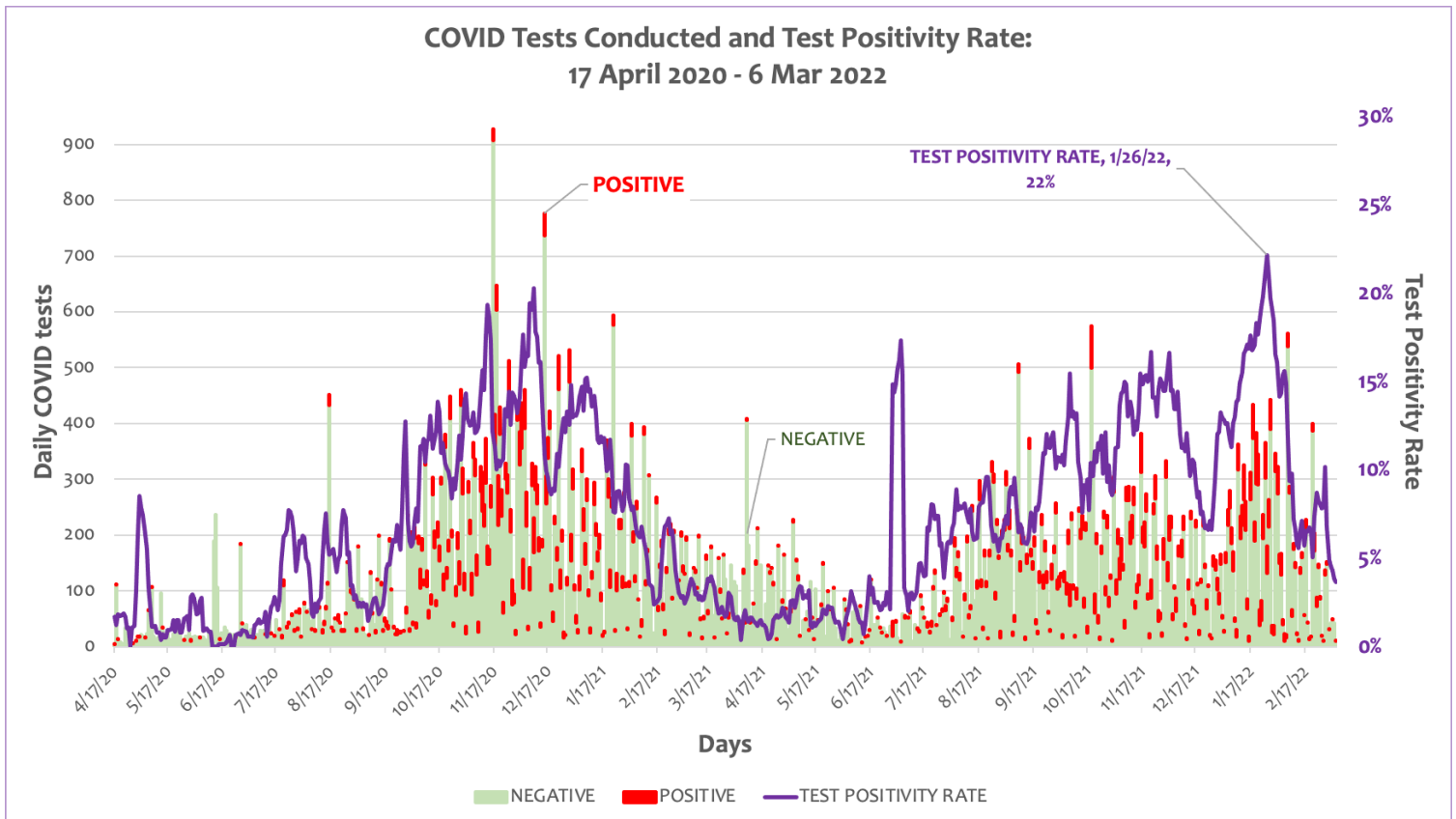
|                   | 0-19 YRS | 20-34 YRS | 35-44 YRS | 45-54 YRS | 55-64 YRS | 65-74 YRS | 75-84 YRS | 85+ YRS | ALL AGES |
|-------------------|----------|-----------|-----------|-----------|-----------|-----------|-----------|---------|----------|
| <b>Chase</b>      | 11%      | 34%       | 38%       | 47%       | 50%       | 83%       | 74%       | 65%     | 43%      |
| <b>Dundy</b>      | 7%       | 21%       | 22%       | 33%       | 41%       | 66%       | 100%      | 42%     | 30%      |
| <b>Frontier</b>   | 7%       | 31%       | 36%       | 43%       | 50%       | 62%       | 54%       | 100%    | 37%      |
| <b>Furnas</b>     | 15%      | 40%       | 48%       | 49%       | 60%       | 83%       | 92%       | 78%     | 50%      |
| <b>Hayes</b>      | 8%       | 23%       | 33%       | 20%       | 30%       | 76%       | 48%       | 50%     | 29%      |
| <b>Hitchcock</b>  | 6%       | 22%       | 34%       | 33%       | 47%       | 76%       | 51%       | 64%     | 35%      |
| <b>Keith</b>      | 14%      | 37%       | 44%       | 43%       | 61%       | 64%       | 67%       | 85%     | 45%      |
| <b>Perkins</b>    | 10%      | 30%       | 41%       | 45%       | 52%       | 72%       | 81%       | 56%     | 40%      |
| <b>Red Willow</b> | 11%      | 34%       | 45%       | 43%       | 59%       | 93%       | 68%       | 87%     | 43%      |
| <b>SWNPHD</b>     | 11%      | 33%       | 41%       | 43%       | 55%       | 76%       | 69%       | 75%     | 42%      |

|                         |   |
|-------------------------|---|
| <b>0% - 24%</b>         | Less than 1/4th received 1 or 2 dose as recommended |
| <b>25% - 49%</b>        | 1/4ths to 1/2 received 1 or 2 dose as recommended   |
| <b>50%- 74%</b>         | 1/2 to 3/4ths received 1 or 2 dose as recommended   |
| <b>75% &amp; higher</b> | Over 3/4ths received 1 or 2 dose as recommended     |

- The first graph below describes the **average daily number of new cases** across all 9 counties of Southwest Nebraska Public Health Department from 5 May 2020 – 6 March 2022. Daily average is depicted by the 7-day rolling average of cases. The second graph describes the daily average of cases by age. The width of the graph represents the average number of new COVID cases for the previous 7-days, and the individual colors describe the ages.
- In general, blue = 65+ years, Yellow & Orange = 35-64 year olds, Red = Less than 35 year olds.



- The graphs below describe the **daily COVID tests** in SWNPHD from **April 17, 2020 – March 6, 2022**, further divided as **positive or negative**.
- The graph also describes the average **test positivity rate (7-day rolling average)**<sup>2</sup> The graph depicts the entire district: Chase, Dundy, Furnas, Frontier, Hayes, Hitchcock, Keith, Perkins, and Red Willow counties.
- The height of the bar graph represents the total tests conducted on that day. The running line graph tracks 7-day positivity rate among all COVID tests in the last 23 months.
- Scale is different for both graphs



SWNPHD is located at 404 West 10th St (1 block north of Arby's) in McCook and can be reached by calling 308-345-4223. The website [www.swhealth.ne.gov](http://www.swhealth.ne.gov) contains many resources and additional information helpful to prevent disease, promote and protect health. You can also follow SWNPHD on Facebook and Instagram. SWNPHD serves Chase, Dundy, Frontier, Furnas, Hayes, Hitchcock, Keith, Perkins, and Red Willow counties.

###

<sup>2</sup> (7-day rolling average) test positivity rate = (Sum of positive results for preceding 7 days) / (Sum of all tests conducted in the preceding 7 days)